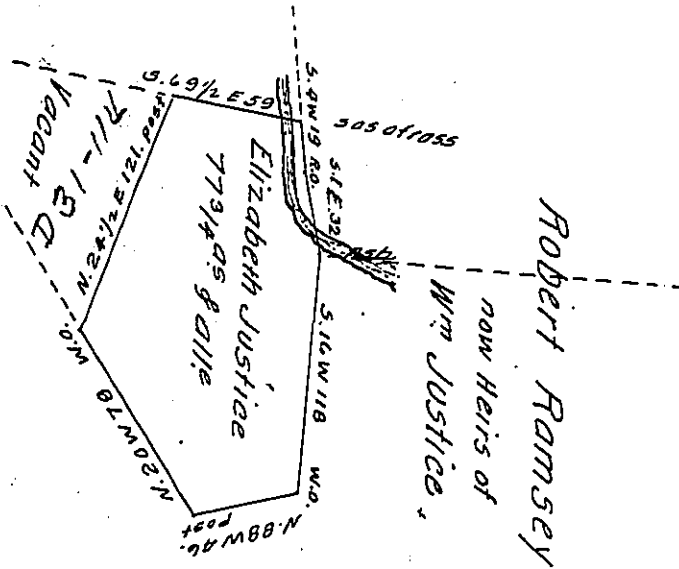


D-16-241

Charles Linn



Heirs of Joseph Evans

Situate on the Waters of Aughwick Creek in Dublin Township Bedford County Containing 77 ³/₄ acres and allowance of Six p^{ct} Cent. Surveyed the 18th day of September 1837. On Warrant dated the 31st day of July 1837.

Wm A. Vickroy D.S.

To John Taylor Esq^r
S.G.

IN TESTIMONY that the above is a copy of the original remaining on file in the Department of Internal Affairs of Pennsylvania, made conformably to an Act of Assembly approved the 16th day of February, 1833, I have hereunto set my Hand and caused the Seal of said Department to be affixed at Harrisburg, this tenth day of September 1907.

Henry Howell
Secretary of Internal Affairs.